

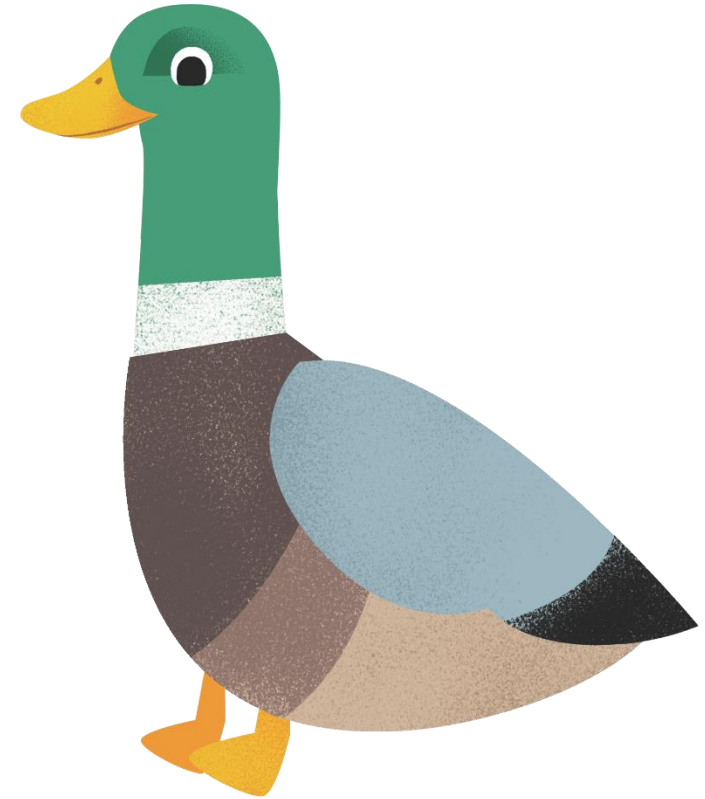
ELS Essential
Letters and
Sounds
developed by Knowledge Schools Trust

Essential Letters and Sounds The Phonics Screening Check



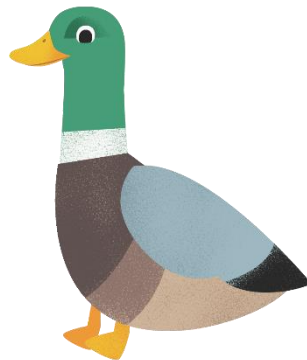
What are we going to cover?

- What is the PSC and why was it introduced?
- What does it check?
- What are the allowances?
- How ELS supports children to achieve the outcomes of the PSC



What is the PSC?

- Phonics Screening Check is a statutory assessment conducted in the Summer Term of Year One.
- Introduced in 2011, to ensure that all children have learnt phonic decoding to an age-appropriate standard.
- The aim of the PSC was to encourage all schools to pursue a rigorous phonics programme for all children from the start of primary school.

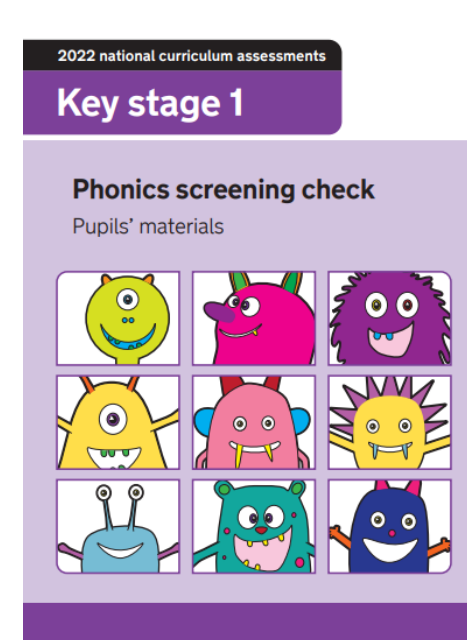


What does the PSC assess?

40 words

Section 1: 8 real words and 12 pseudo words

Section 2: 12 real words and 8 pseudo words



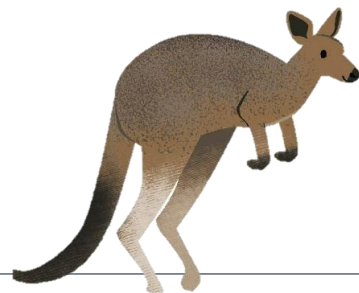
Key information

- Pseudo words, are not real words. In the assessment, these words will have an alien image next to them.
- All accents will be taken into account when the child is answering.
- Any pronunciation difficulties will be taken into account.
- Your child's final answer is what we will take.



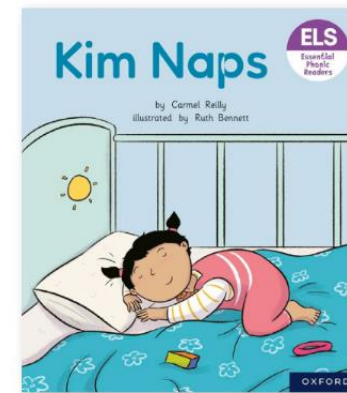
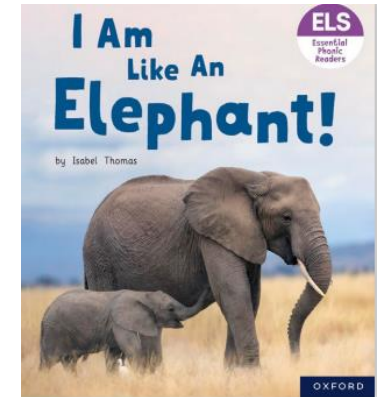
How does ELS support the PSC?

- We focus on teaching children to read and to have access to books and text.
- ELS teaches children vocabulary and ensures that children have meaning and context for language.
- Teaches accuracy, fluency and confidence.
- Accurate assessment ensures that you know where every child is.



How can you help at home?

- Listen to your child read 3 times a week minimum
- Watch the online pronunciation videos
- If your child is finding it hard to read a word, help them break words down into individual sounds and then blend them together to read the word.



Questions

