

**Theme** – the big idea or message of the art.

**Content** – what is included in the art.

**Process** – how a piece of art was put together.

**Impact** – a strong effect on something.



## Art - Painting

### Elements of Art

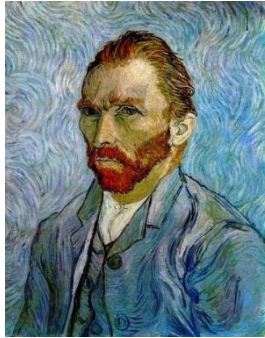
**Colour** – how we describe the way our eyes see light.

**Line** – a mark made on a surface that joins different points.

**Shape** – a 2D area.

**Space** – the area around the objects in a piece of art.

Combine simple shapes to create an overall object.



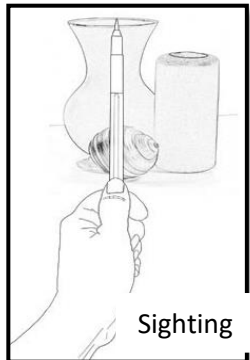
Vincent Van Gogh



LS Lowry



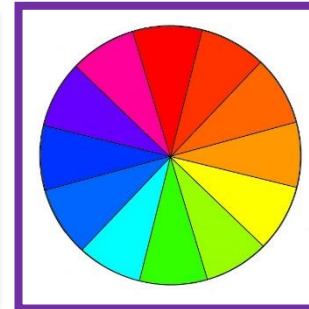
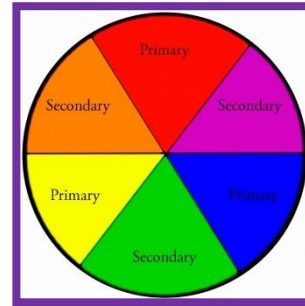
Coming from the Mill



Sighting

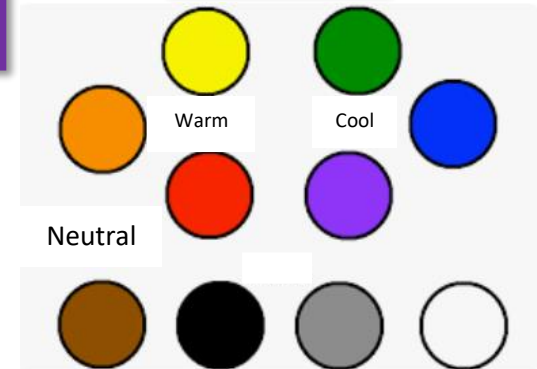


The Starry Night



Contrasting colours are opposite on the colour wheel.

### Colour Families



### Vocabulary

**Contrasting** – opposite elements are arranged together e.g. black and white, thick and thin, smooth and rough.

**Landscape** – art showing natural and man-made scenery.

**Watercolour** – type of paint that works when mixed with water.

**Refining** – make minor changes over and over to improve something.

**Realistic** – accurate to real-life.

**Linear perspective** – The further away an object is, the smaller it appears.

**Aerial perspective** – The farther away an object is, the weaker their colour and detail appear.

